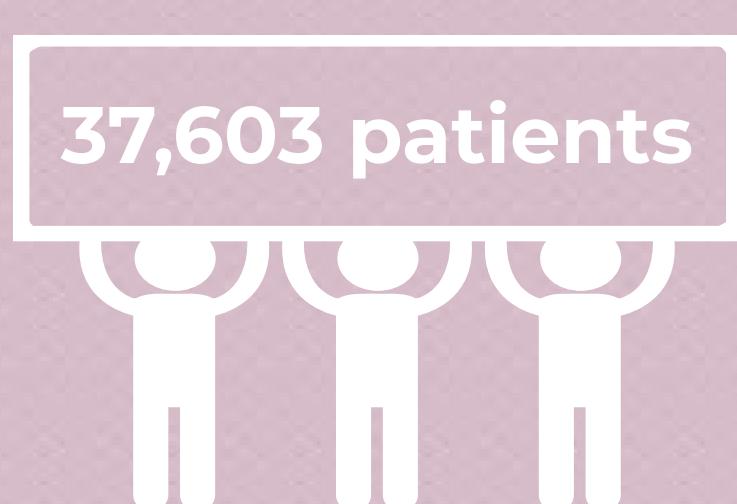
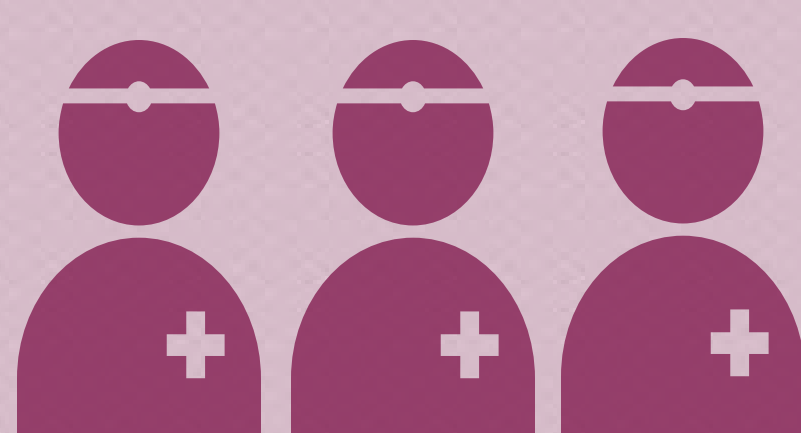


The Australian Breast Device Registry (ABDR) is a clinical quality registry for breast devices - implants, tissue expanders and acellular dermal matrices (ADM)/mesh. The ABDR aims to identify and report possible trends and complications associated with breast device surgery; track the long-term safety and performance of breast devices; identify best surgical practice; and optimal patient health outcomes. This report does not represent national coverage.

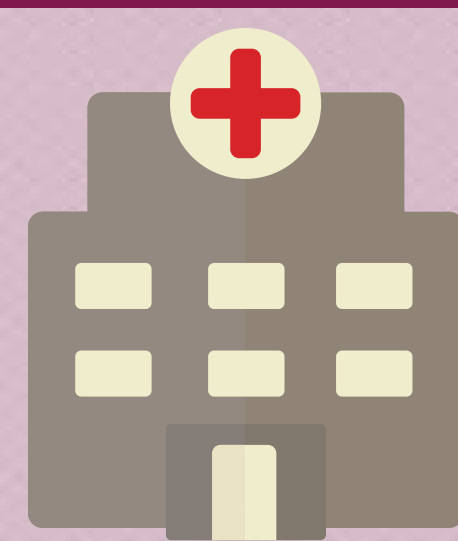
Recruitment 2012 - 2018



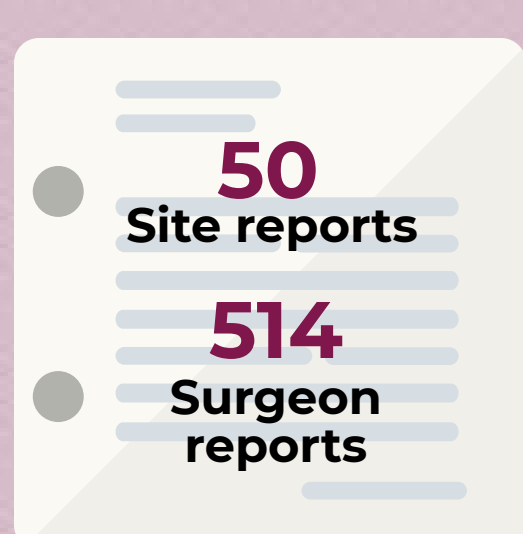
Opt out rate 1.1%



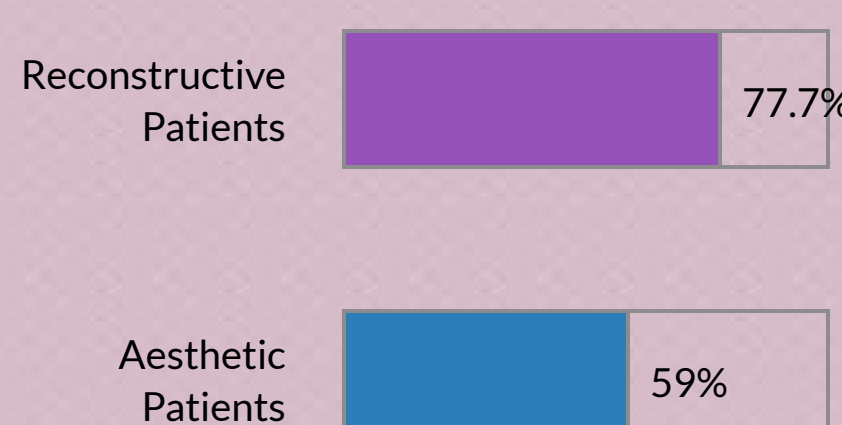
514 participating surgeons



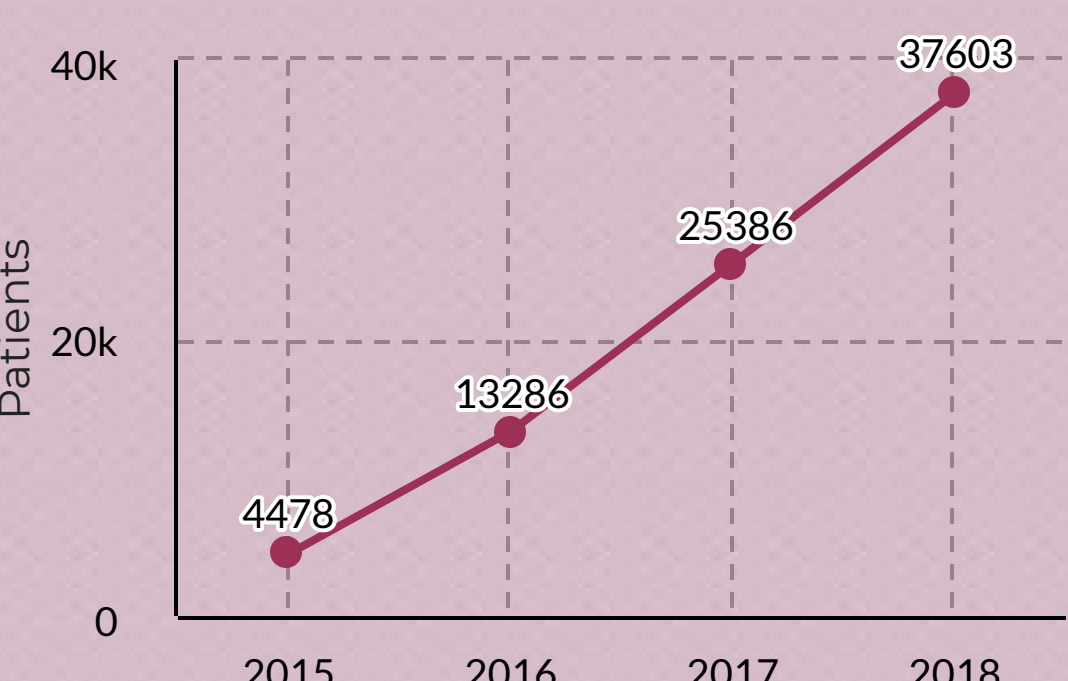
280 healthcare sites



Personalised site and surgeon reports sent to eligible sites



Patient Reported Outcome Measures (PROMs) response rates



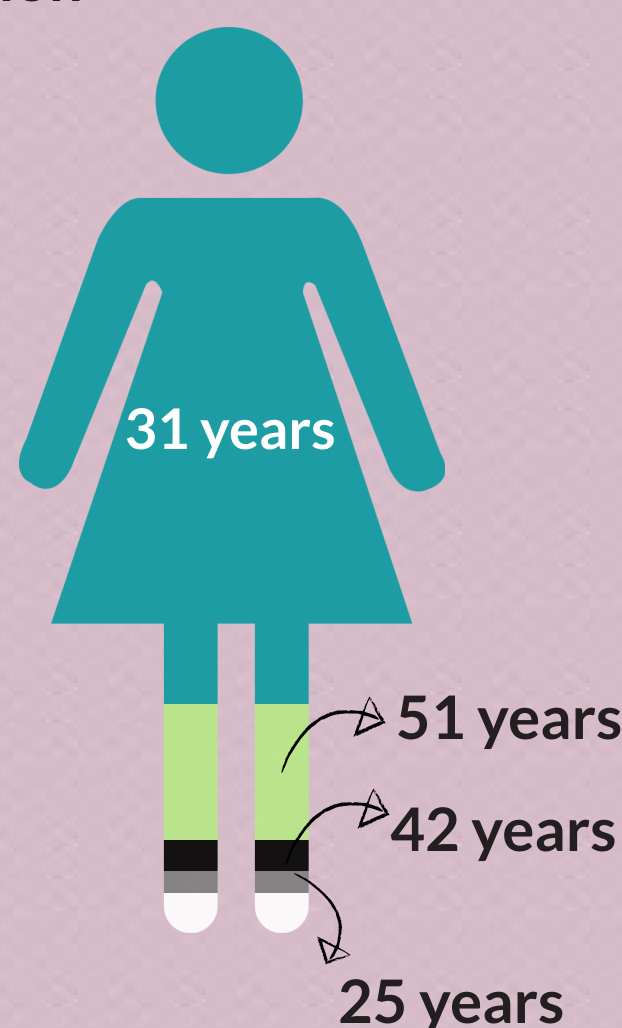
Registry growth

Procedures captured

Indication for surgery

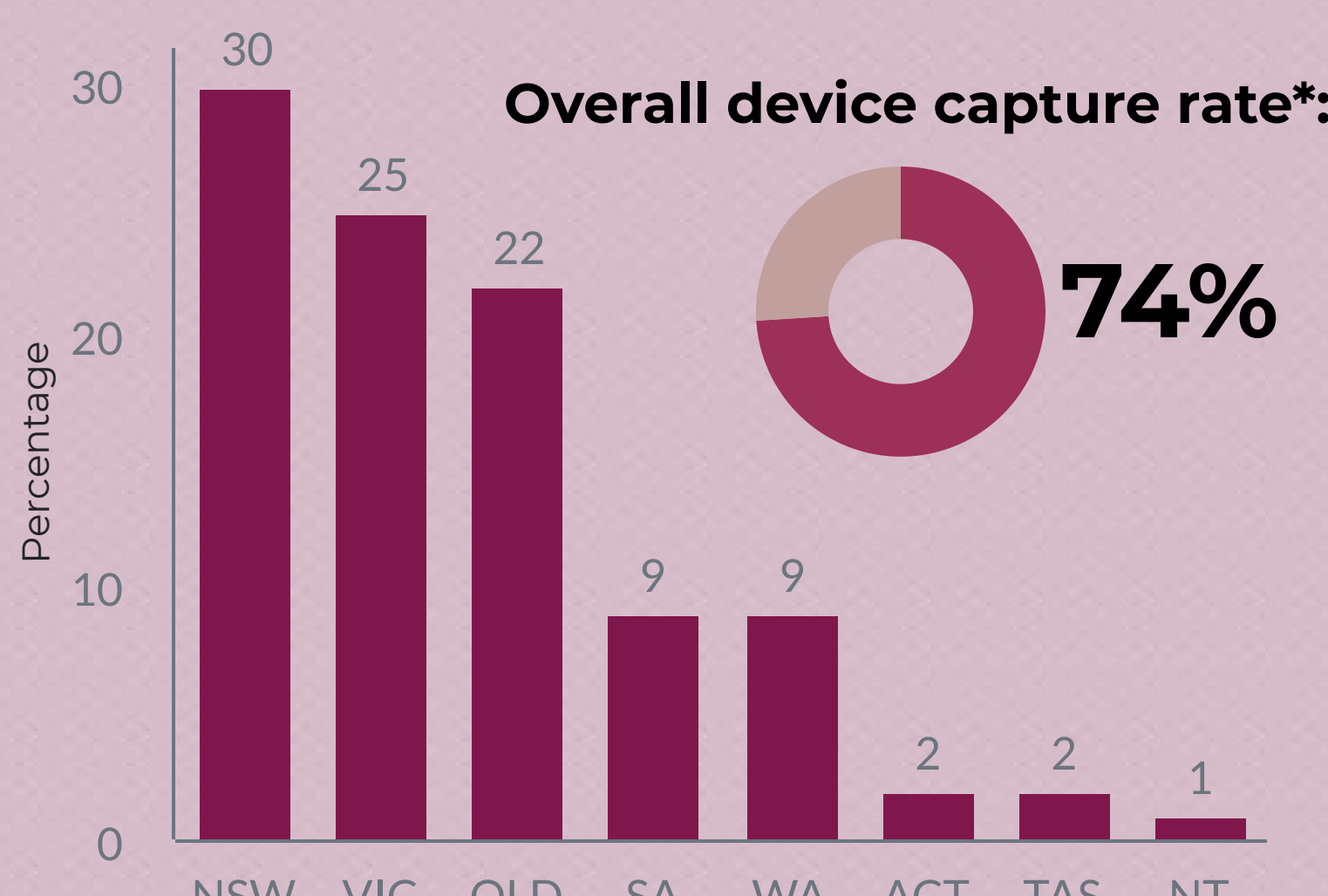
Median age[^] by indication

- 74.7% Cosmetic
- 15.1% Post-cancer reconstruction
- 3.4% Risk-reducing reconstruction
- 2.4% Developmental deformity
- 4.4% Not stated



[^] age at time of insertion procedure

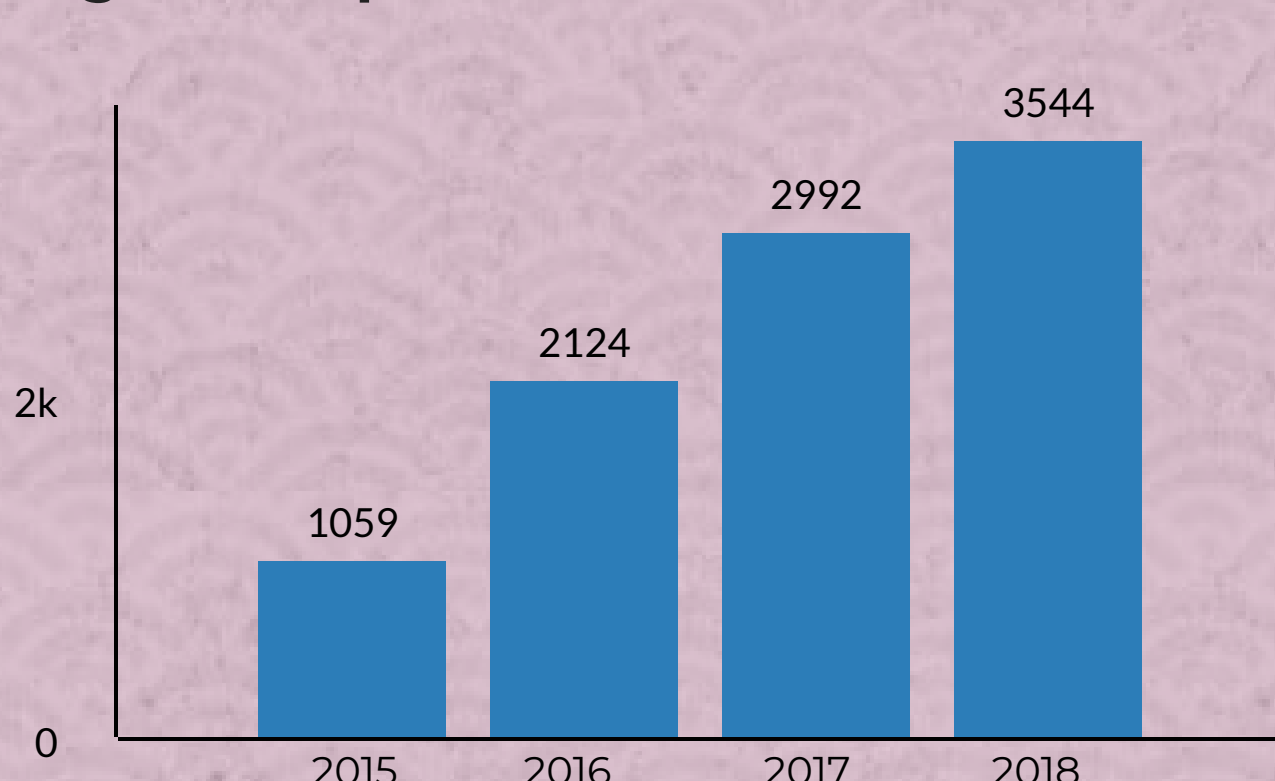
Location of participating sites



* As % of national sales data

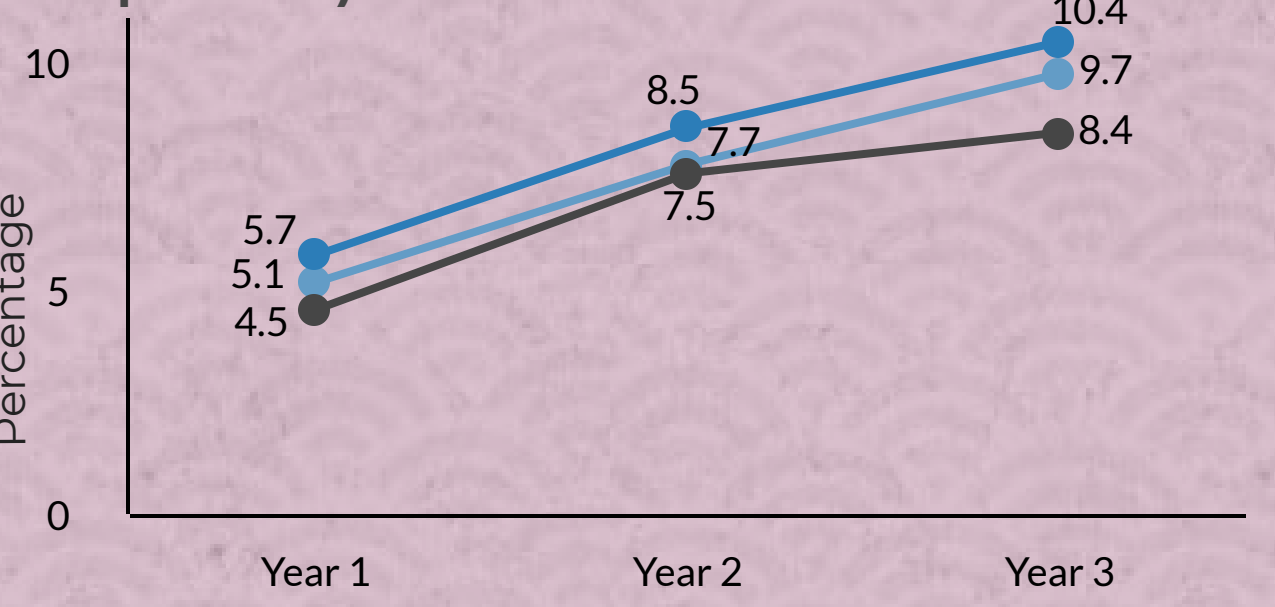
Reconstructive Patient Outcomes

Registered procedure numbers



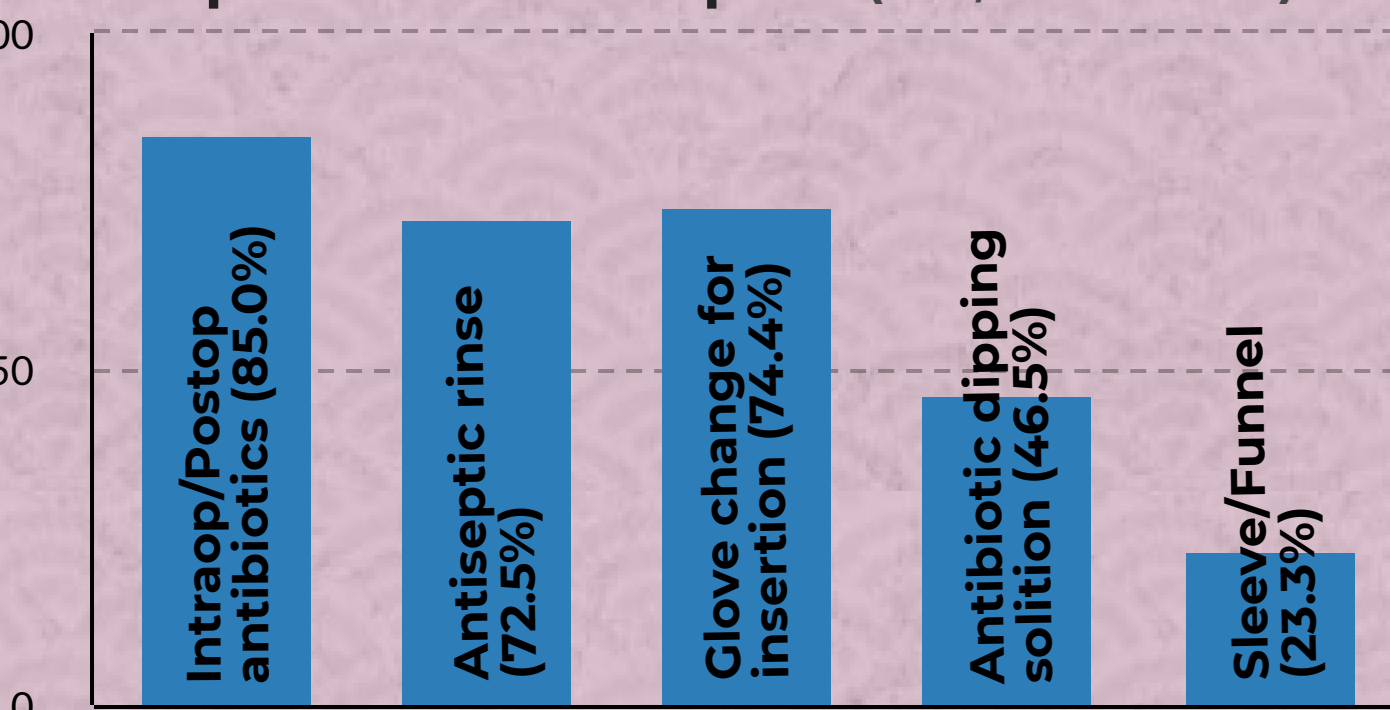
Complication revision incidence rates at years since primary implant**

(n=8,245 primary implants with 568 revised due to complication)



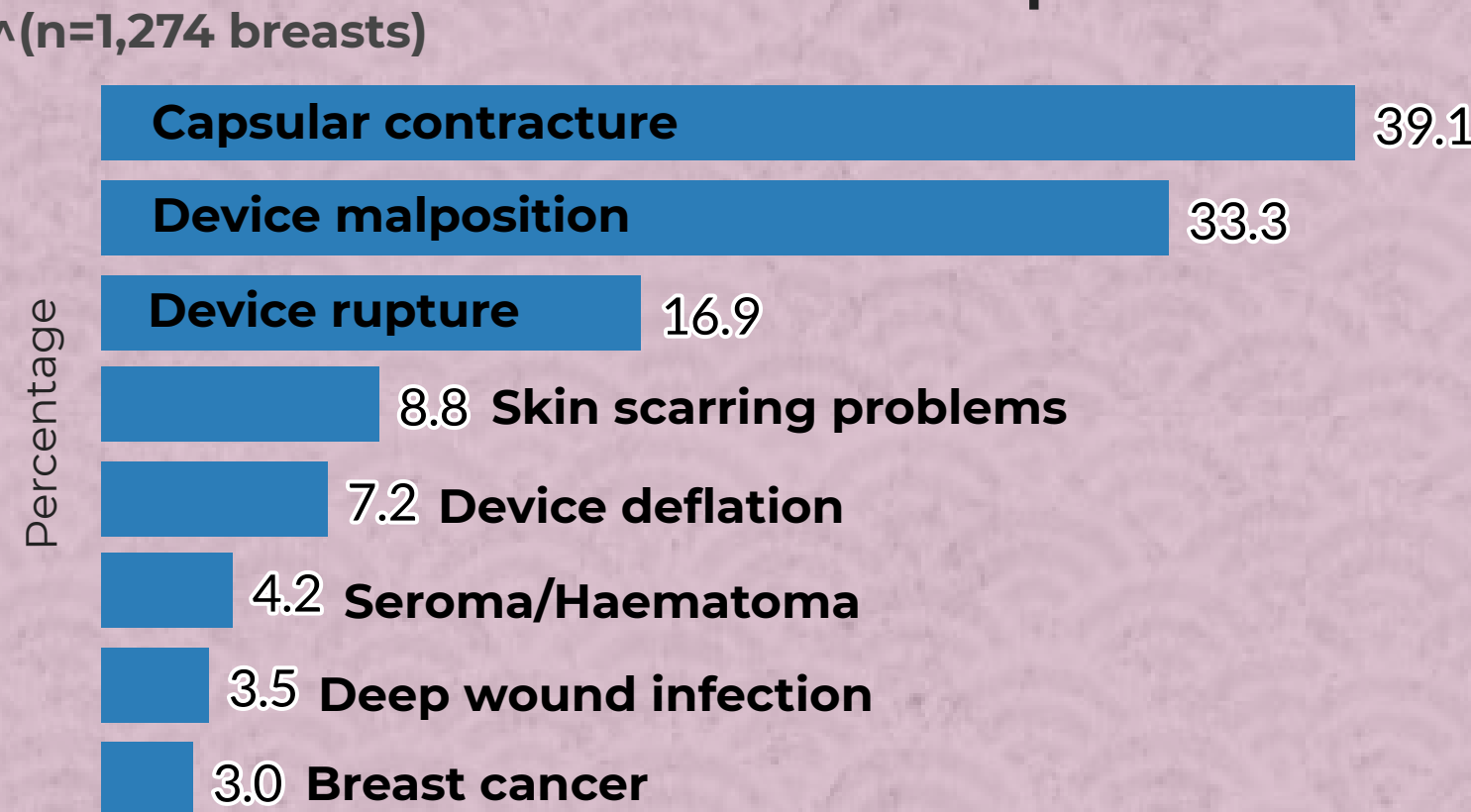
**Rates have not been adjusted for risk factors

Intraoperative techniques *(n=3,544 breasts)



*more than one intraoperative technique can be used and recorded per procedure, results show 2018 data only

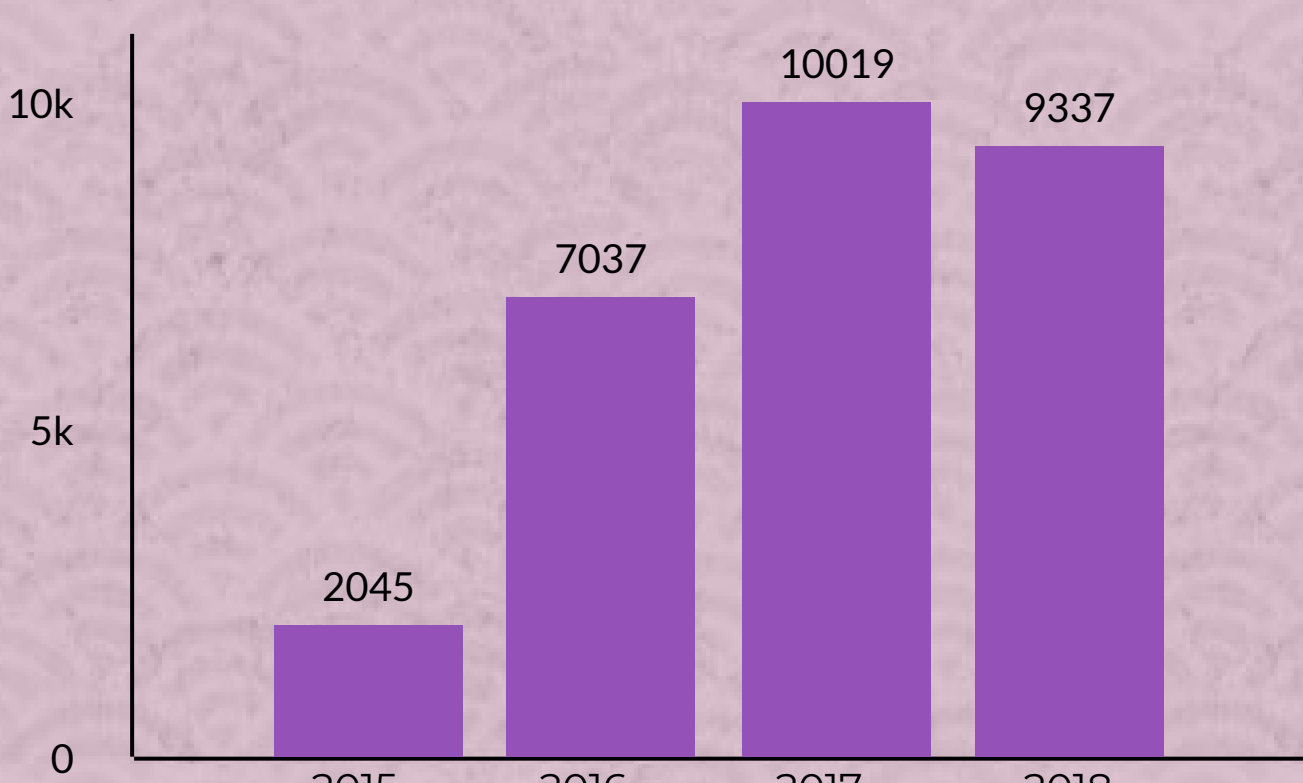
Issues identified at revision of implants



^multiple issues may be recorded at one revision procedure, results show 2018 data only

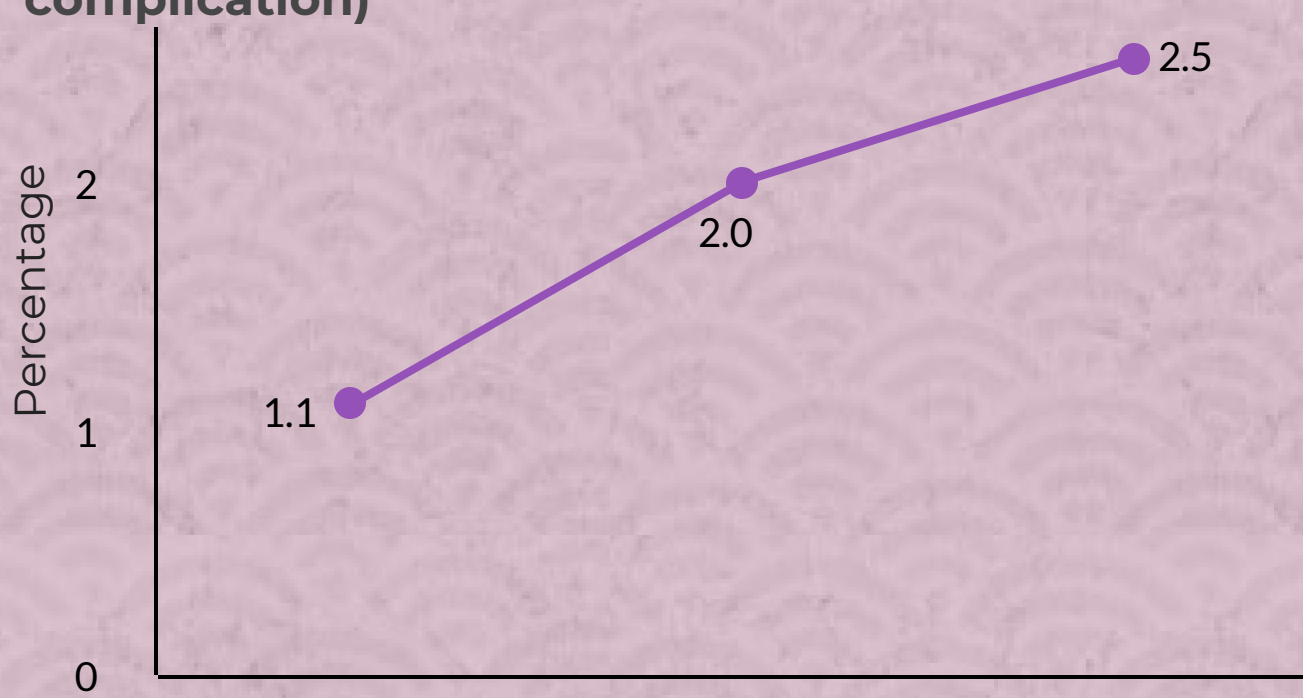
Aesthetic Patient Outcomes

Registered procedure numbers



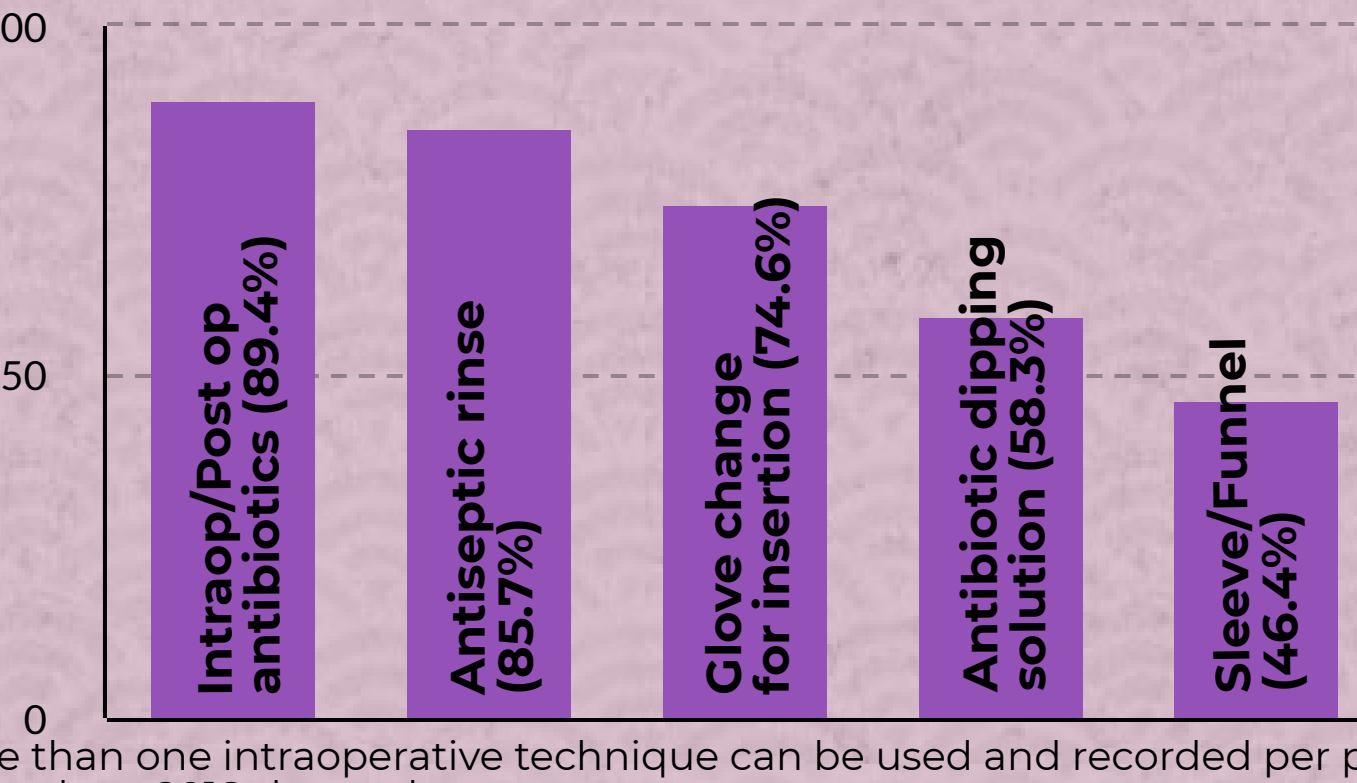
Complication revision incidence rates at years since primary implant**

(n=45,455 primary implants with 747 revised due to complication)



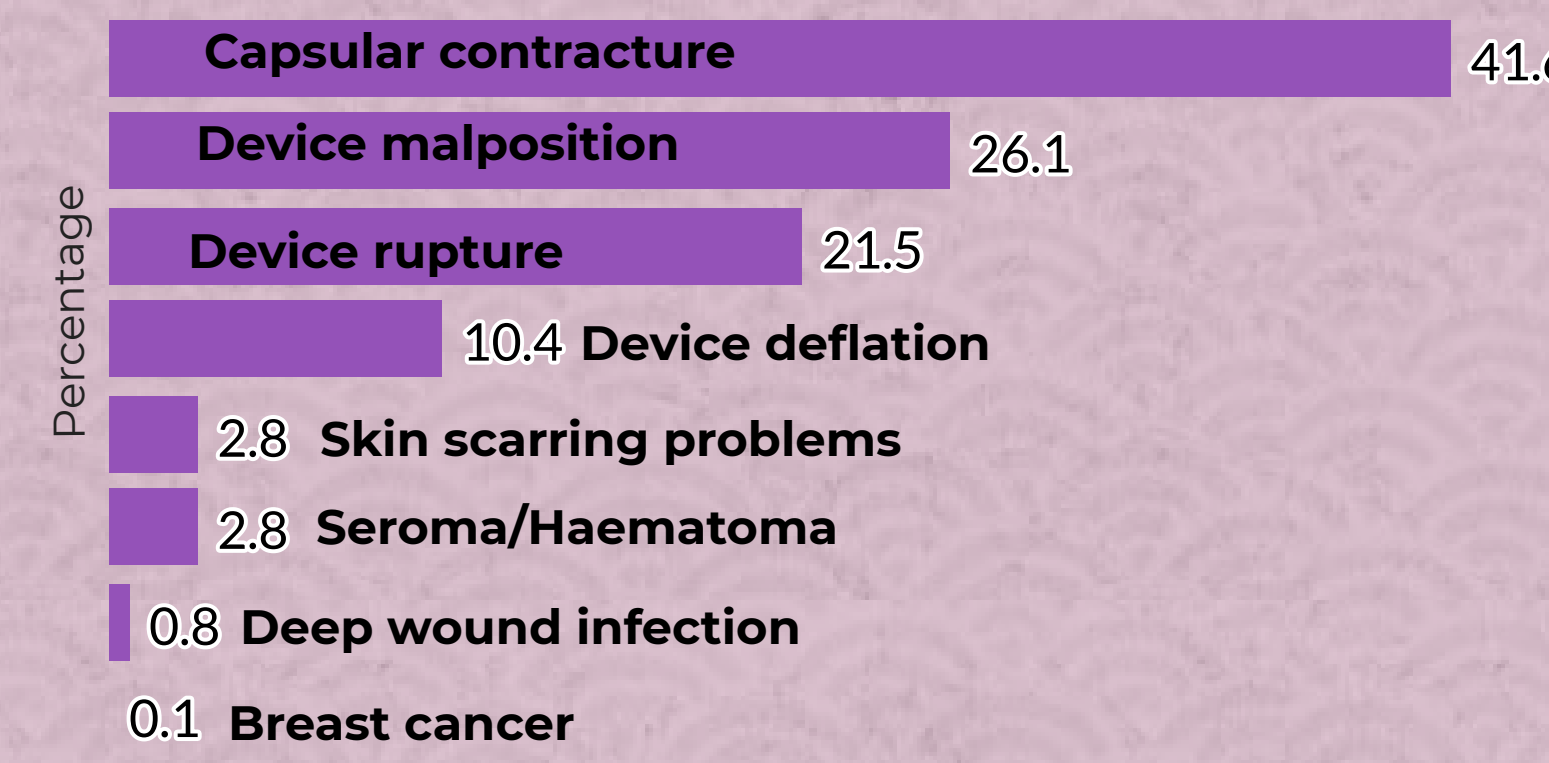
**Rates have not been adjusted for risk factors

Intraoperative techniques *(n=9,337 breasts)



*more than one intraoperative technique can be used and recorded per procedure, results show 2018 data only

Issues identified at revision of implants



^multiple issues may be recorded at one revision procedure, results show 2018 data only